

# R1200GSW Luggage/Tank System Installation

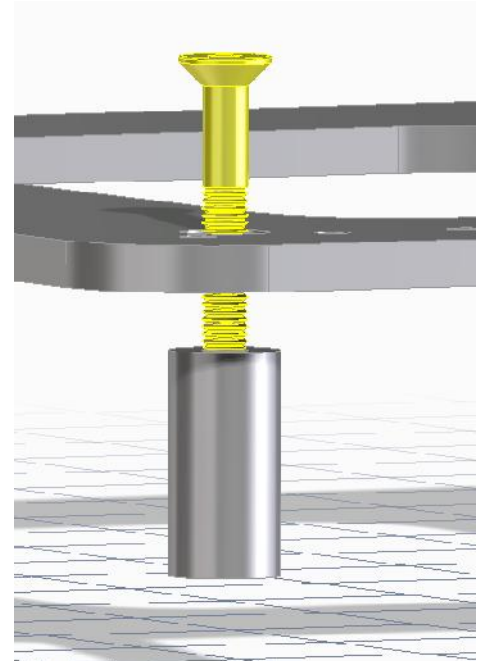
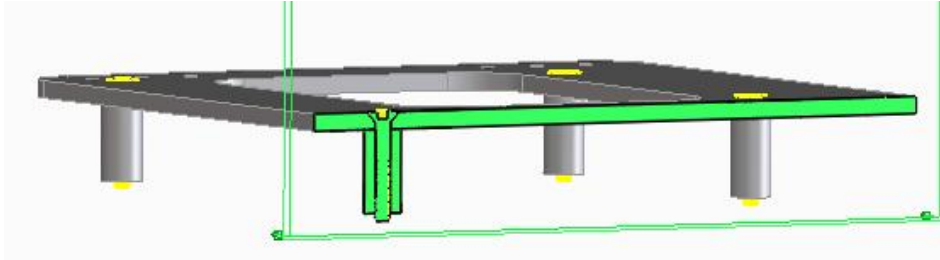
These are custom directions specifically for the Sandia BMW techs on this prototype system. I have tried to get it right but one never knows until the bolts are all in place.

Please advise me of any errors, omissions, or mistakes.

**Step 1** Remove the stock luggage rack.

**Step 2** Install the mounting plate using the aluminum spacers and the M8 button head cap screws. Tighten to the recommended torque as for the luggage rack..

**NOTE:** Images show flat head but I didn't trust that the alignment would be good enough for flat head. The cap screws allow you to egg out the hole if needed. [please let me know if this is the case so I can modify my dimensions]



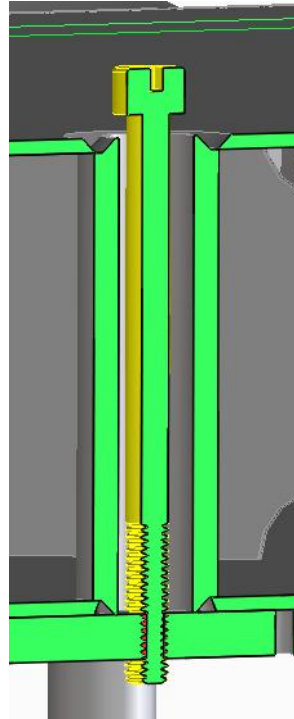
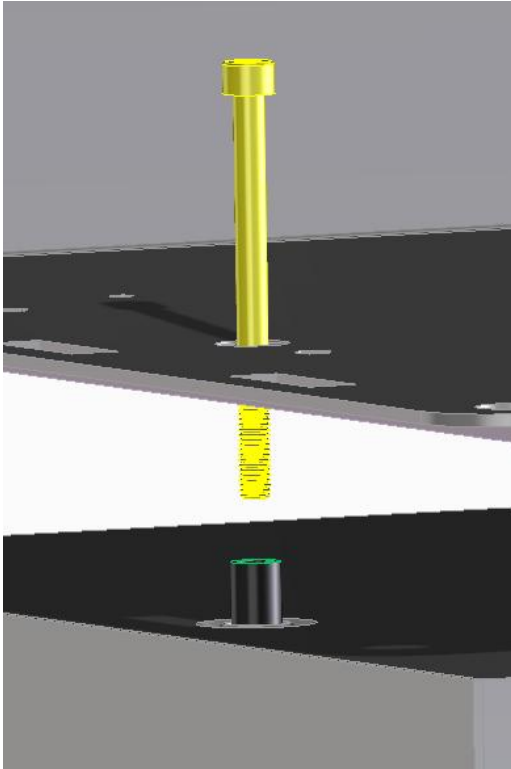
**Step 3** Place the tank over the mounting plate. Visually align the holes as closely as possible. This will facilitate starting the bolts.

**Step 4** Put the spacer tubes (steel painted black) in the holes of the tank.

**Step 5** Place the deck on top of the tank. Again, make sure everything is aligned as close as possible.

**Step 6** Place a split lock washer and a flat washer on the long M8 bolt.

**Step 7** Place these bolts through the deck and tank holes.



**Step 8** Start all bolts with one or two threads.

**NOTE:** Do not tighten any of these 4 bolts until all have been started. Getting everything aligned can be tedious.

**Step 9** Once all 4 bolts have been started tighten them to 7 to 10 NM.